

Mapping Ancestry through Sound, Space and Time

Stina Baudin

October 3 - November 17, 2024

Curated by Whess Harman

Exhibition Map:

1. ***Infinite Knowledge: The poetics of circularity (2024)***
Glass beads, recycled fabric materials, paint
2. ***Keepers of Time: There are ladders that will bring you to new truths (2023)***
Glass beads, two ticking clocks, recycled fabrics, cotton, silk
3. ***Ou genyen je o
Ou genyen je o, cheri
Pou we tout bagay (2024)***
You have eyes
You have eyes dear
To see everything
Glass beads, recycled fabrics, casted hands, found gloves, salt
4. ***Black Time and Past, Presences (2024)***
Metal clock with glass face, archival paper

grunt gallery

#116 - 350 East 2nd Avenue

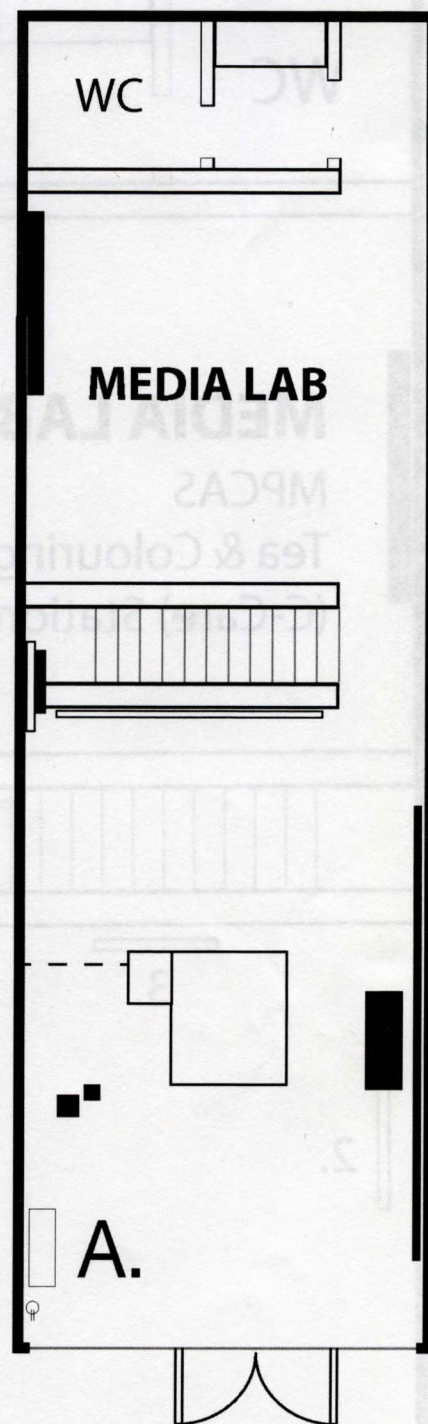
Vancouver, BC, V5T 4R8

Phone: 604-875-9516

grunt

Accessibility Notes:

- Artworks are not meant to be touched. This exhibition has tactile drawings available for each work within a red, and brailled covered folio, as well as written visual descriptions in the Exhibition Binder in English at the welcome station (A).
- A power outlet is also here (A).
- Masks are requested in the space, and a sanitization station (A) is available for handcleaning upon entry.
- A creative access tour is available in the orange carrying case to the left of the welcome station. You can carry this or pull out the small YOTO player and use your own headphones (a). A written transcript is available in the binder.
- Any questions or feedback are welcome at access@grunt.ca or by calling 604-875-9516.



Thursdays - Low Sensory/Voice-Off Hours:

From Noon-5 PM, we will offer a low-sensory and/or voice-off experience to visitors wishing to visit the space and our exhibitions.

Goals: Scent-reduced, silent, with accessible resources.

Masks are **required** during Low Sensory visiting hours.

To learn more visit grunt.ca/low-sensory.